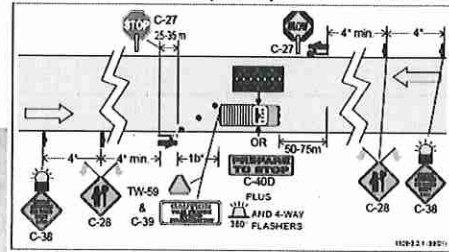


Figure 3.2.1 Intermittent Moving Work
- Two Lane Two-way Roadway



Regulatory Speed Limit	50 km/h	60 km/h	70 km/h	80 km/h	90-100 km/h
1a Taper Length For Lane Closure	35 (1:10)	55 (1:15)	75 (1:20)	90 (1:25)	110 (1:30)
1b Taper Length For Shoulder Work on Where TCs Used (Min. 3 Cones)	5	8	10	12	15
2 Maximum Distance Between Cones or Tubular Markers for 1a	10	10	10	10	10
3 Minimum Tangent Distance Between Tapers	30	60	90	120	150
4 Distance Between Construction Signs	40	60	80	100	150

LEGENDS:

- SIGN STAND
- DELINEATORS
- TCP
- ARROWBOARD TRUCK
- POLE
- REMOVE POLE
- MANHOLE/SERVICE BOX
- NEW BUILD

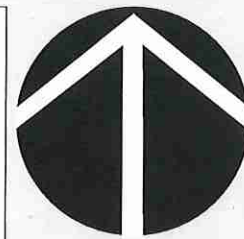
SCOPE:
- FIBRE OPTIC CABLE INSTALLATION

DATES:
- Jun 14-30, 2017

HOURS:
- 7AM - 5PM

DRAWING #:
- RPN 657531

- NOTES:**
- ALL TRAFFIC CONTROL DEVICES AND SIGNS TO COMPLY WITH LATEST MOTM MANUAL WORK ON ROADWAY.
 - MAINTAIN MINIMUM 3.2m LANE WIDTH
 - NOTIFY TRANSIT FOR CONSTRUCTION



PG 07

COMPANY: DIXON NETWORKS CORPORATION

CONTACT: JOHNNY WOO
PHONE: 604-940-8817 EXT. 238

